

M47AI

AI DATA ANNOTATION PLATFORM

m47.ai
info@m47labs.ai

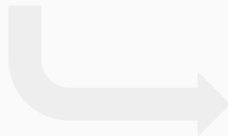
Speed up your labeling operations

Bring your NLP projects to production faster by creating and managing your training data, labeling teams and projects in one single platform.



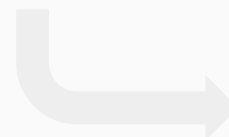
Generate

Generate high-quality training data at scale with our custom annotation UI and fully integrated solution.



Track

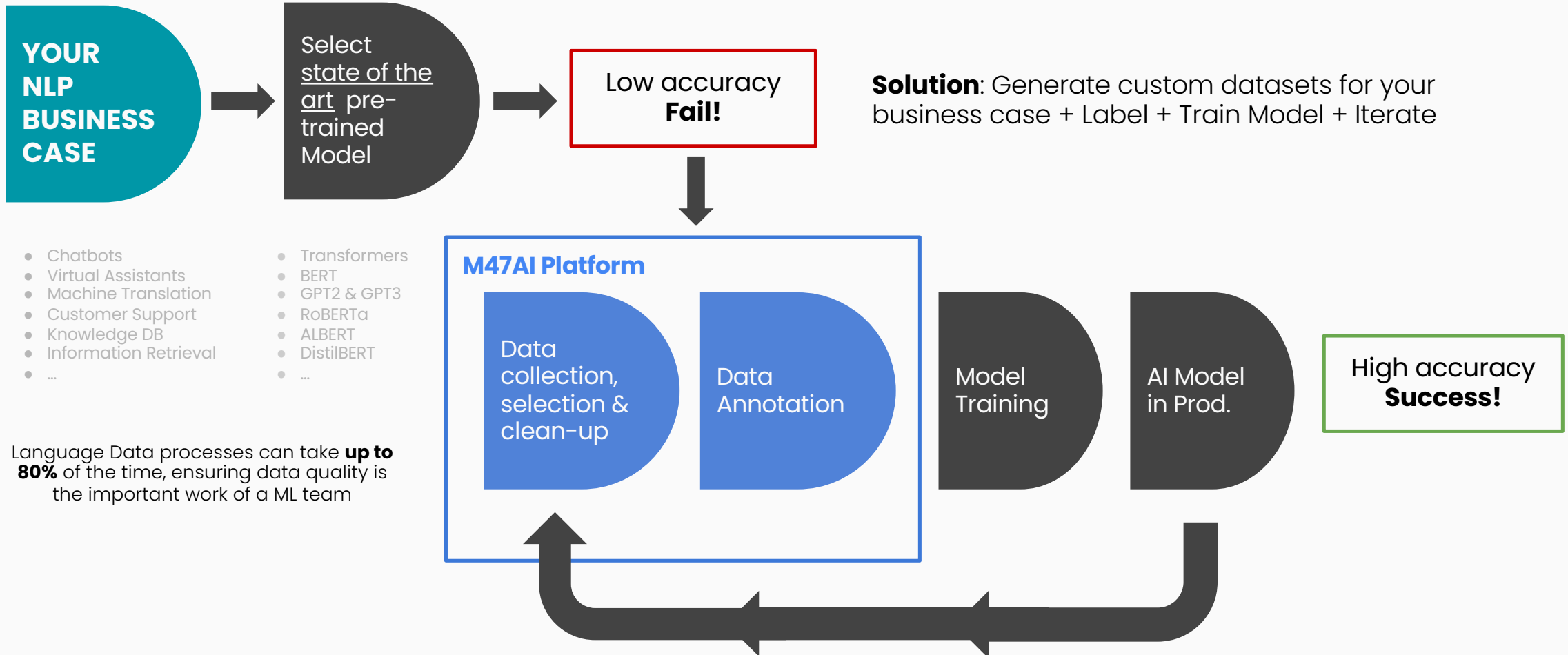
Track progress, review performance and monitor key indicators of large annotation projects and teams.



Automate

Reduce time and improve the quality of your datasets with Intelligent Automation and ML features.

The path to an **efficient** Machine Learning project



Our platform

1

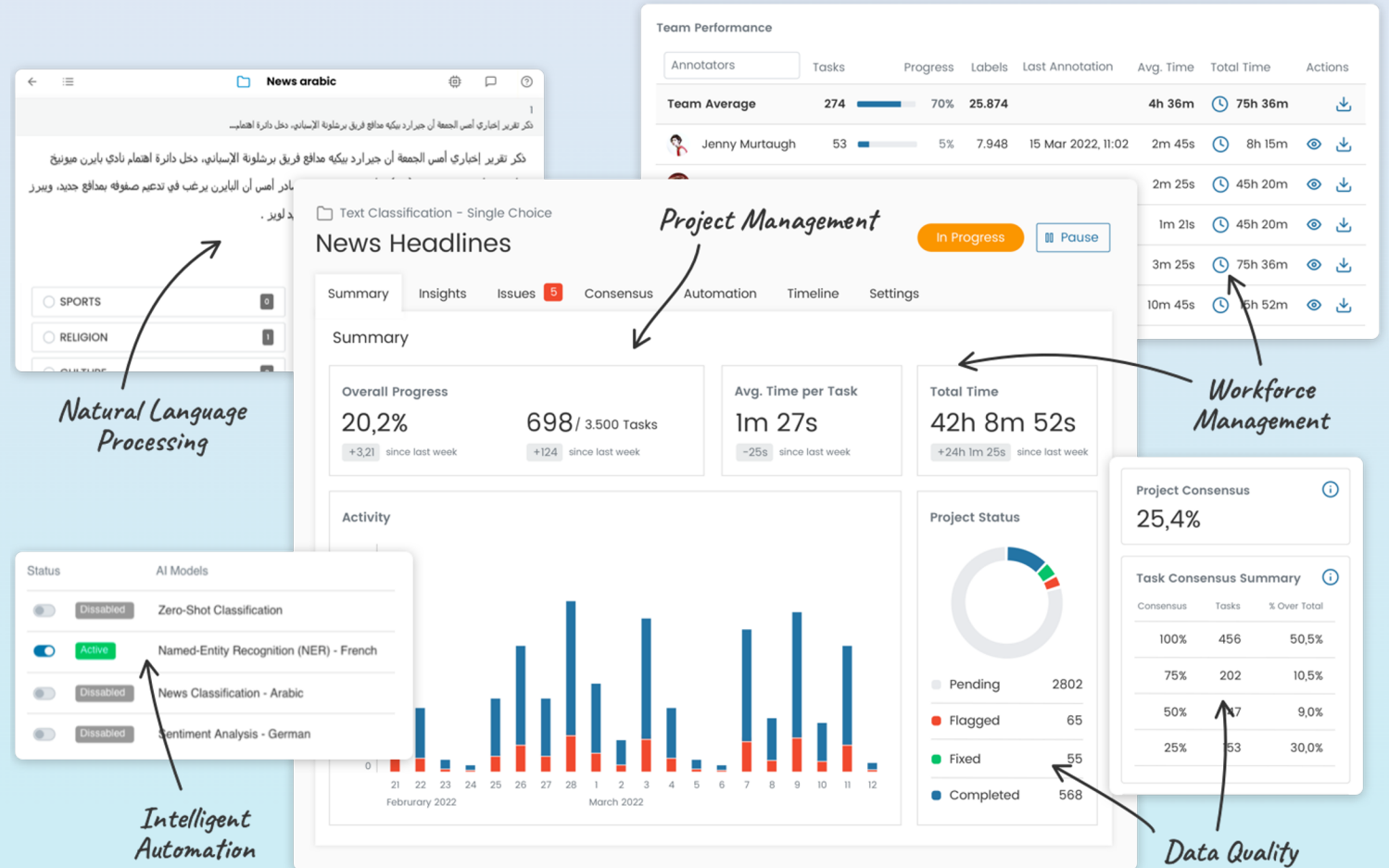
Reduce Time and Cost

2

Improve Model Accuracy

3

Consolidate Labeling Ops



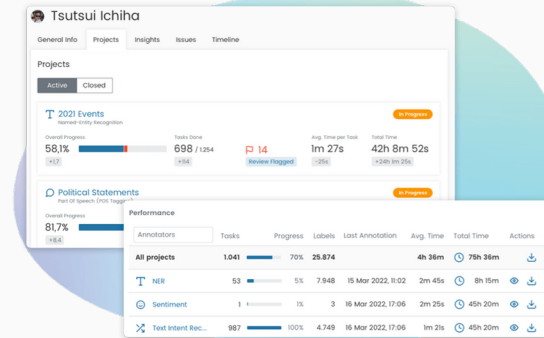
Natural Language Processing

Dozens of supported NLP annotation projects that match every enterprise use case in one single tool. Multilingual. Modular and customizable UI.



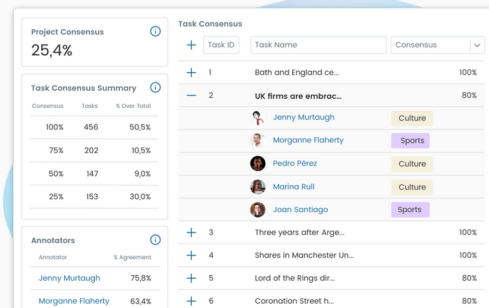
Workforce & Project Management

Monitor annotator's stats, individual skill sets, scoreboards and cost metrics. Collaborate with large teams for a more productive effort. Let your team annotate, review, comment and quantify consensus and progress.



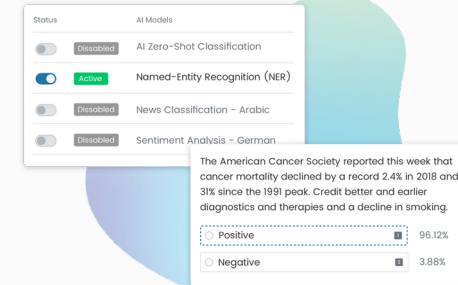
Intelligent Automation

Reduce manual annotation time throughout ML-assisted and weak supervision labeling. Bring your own ML models to speed up pre-annotation and increase your training datasets with data augmentation techniques.



Data Quality

Optimize your training datasets with our Quality features: consensus metrics, error detection, label distribution, bias and outliers identification. Organize and visualize your training data in one single place. Import your pre-annotated datasets and perform QA on your Model performance.



ELG Benefits

1. **Language resources** to **reduce entry barrier** for developing NLP projects in multiple European countries.
2. **Evangelize** and educate **startup ecosystem** about the importance of developing local language based AI systems.
3. Availability of **multipurpose language datasets** to implement state-of-the-art ML Models

What does the ELG have to provide to strengthen our business?

1. Access to a pool of organizations and companies developing **Language Technologies** and in need of generating Training Data.
2. **Connect** needs from the ELG community to solution & service providers.
3. Support dataset and training data creation for **underrepresented languages**.

Contributions to the ELG and its marketplace

1. Provide the **framework** for public institutions, Universities and organizations to **consolidate all their Language Data Labeling Operations**.
2. Offer **discounts and customized plans** to organizations tied to the ELG program.
3. Provide **access to the ELG database directly from our platform** so that resources (datasets and Models) can be used to generate new Training Data.

Benefits for others

1. **Reduce development costs** of custom annotation tools or maintenance of open source
2. **Access to a production grade Data Annotation Platform** that reduces the time and cost of creating, managing and labeling data at scale.
3. **Easily reuse language resources from ELG** for your Training Data needs.

Motivation and goals to engage in the ELG, benefits and positive effects

1. **Acquire knowledge working with R&D institutions** that would let us implement new state-of-the-art functionality needed by leading organizations.
2. **Increase platform usage, visibility** and exposure to the **European market**.

The ELG wishlist

1. **Improve the 'community' based functionality.** It should be easy to create accounts, upload resources, post comments, fork models and datasets.
2. **Increase ELG platform embedded functionality** so it's not only a comprehensive database of resources. Models playground and API accessibility , view/edit/modify datasets, provide hooks to training data, etc.
3. **Increase promotion** and adoption across european language/startup ecosystem

Steps in the right direction!

ELG has the potential to become the 'defacto' platform for language data-centric AI in Europe and should continue to drive and support the local community in developing resources that can be adopted by SMEs across Europe in the mid term.



Get in touch!

enric@m47labs.ai

m47.ai